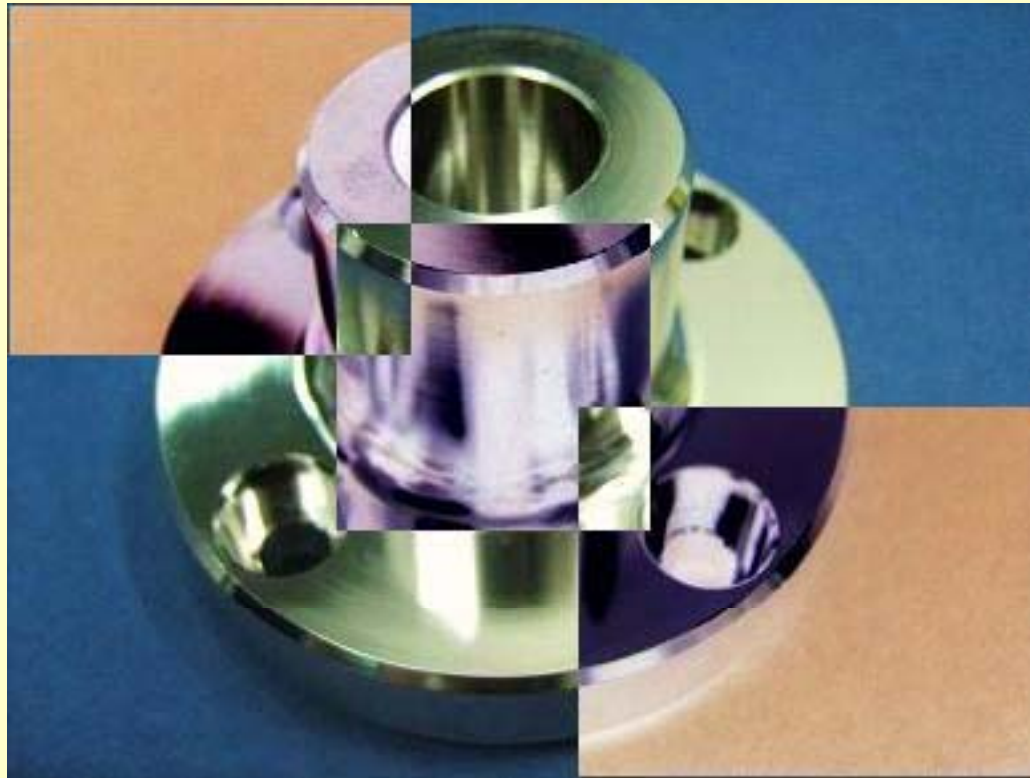


# MALLEDGE ENGINEERING

## Company Profile



## Company Background

- ▶ Started Operations in 1995
- ▶ Principal Processes
  - CNC Turning
  - CNC Milling
  - CNC Turn & Mill
  - Horizontal Milling
  - Grinding
  - Conventional Milling & Turning
  - Welding
  - Shaping
  - Plasma Cutting

# Company Background

## ▶ Human Resources

Management & Admin - 5

Engineers - 2

Machinists - 21

QA - 2

## ▶ Total - 30

# Quality System

## Quality System: Based on ISO 9001 Quality Environment Practices



## Production Equipment

- ▶ CNC Turn Mill: 1
- ▶ CNC Turning: 1
- ▶ Horizontal Milling: 1
- ▶ CNC Milling: 4
- ▶ Conventional Lathes: 5
- ▶ Conventional Milling: 5
- ▶ Grinding Machines: 2
- ▶ Welding: 4
- ▶ Shaping Machine: 1
- ▶ Plasma Cutter: 1

# Production



# Equipment - Quality

- ▶ Vision Inspection System
- ▶ Dial Indicators
- ▶ Digital Micrometers
- ▶ Digital Calipers
- ▶ Pin and Thread Gages



# Product Showcase



CNC Milling Parts



# Product Showcase



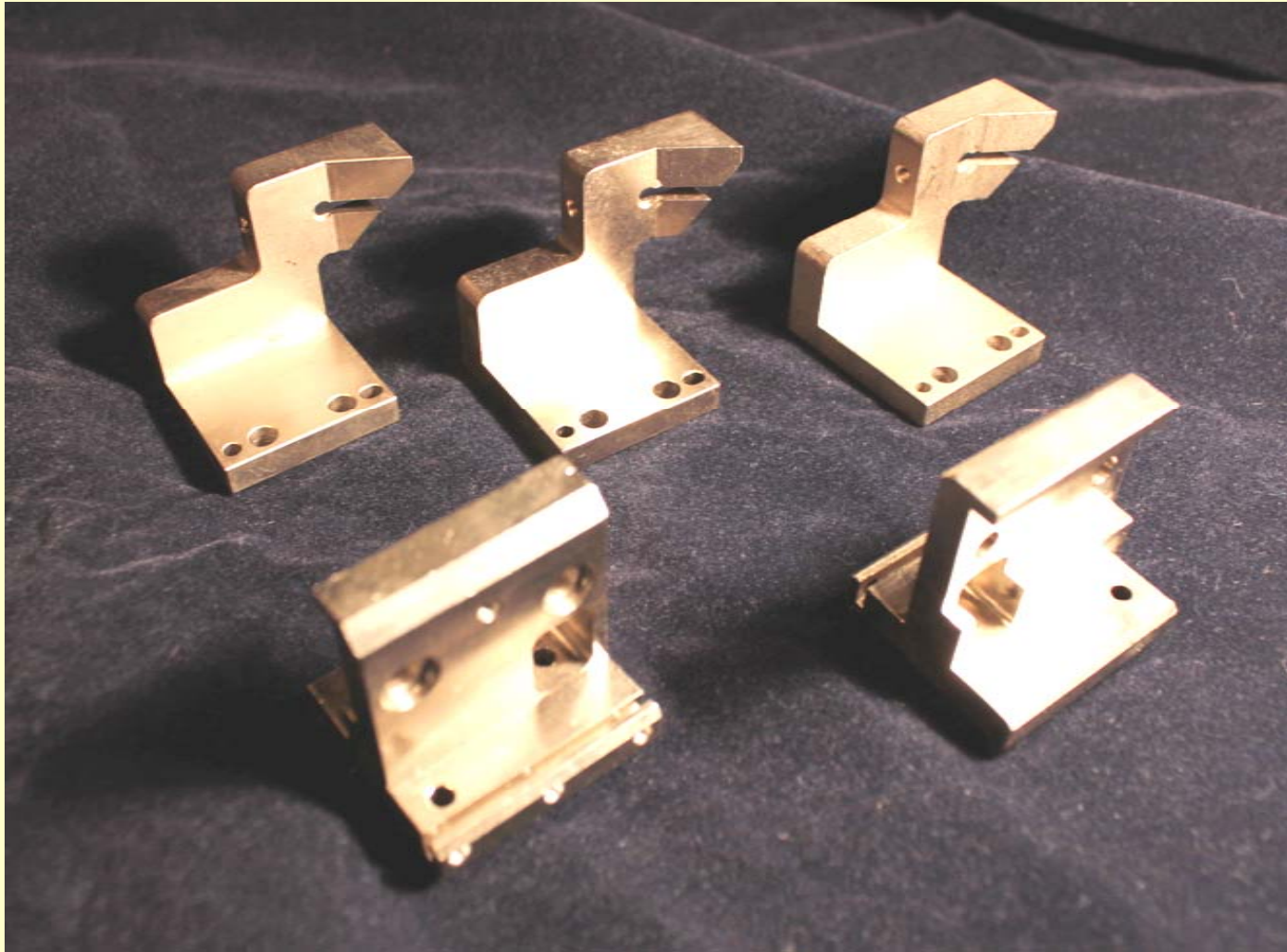
CNC Turning Parts

# Product Showcase



CNC Turn Mill Parts

# Product Showcase



CNC Milling Parts

# Product Showcase



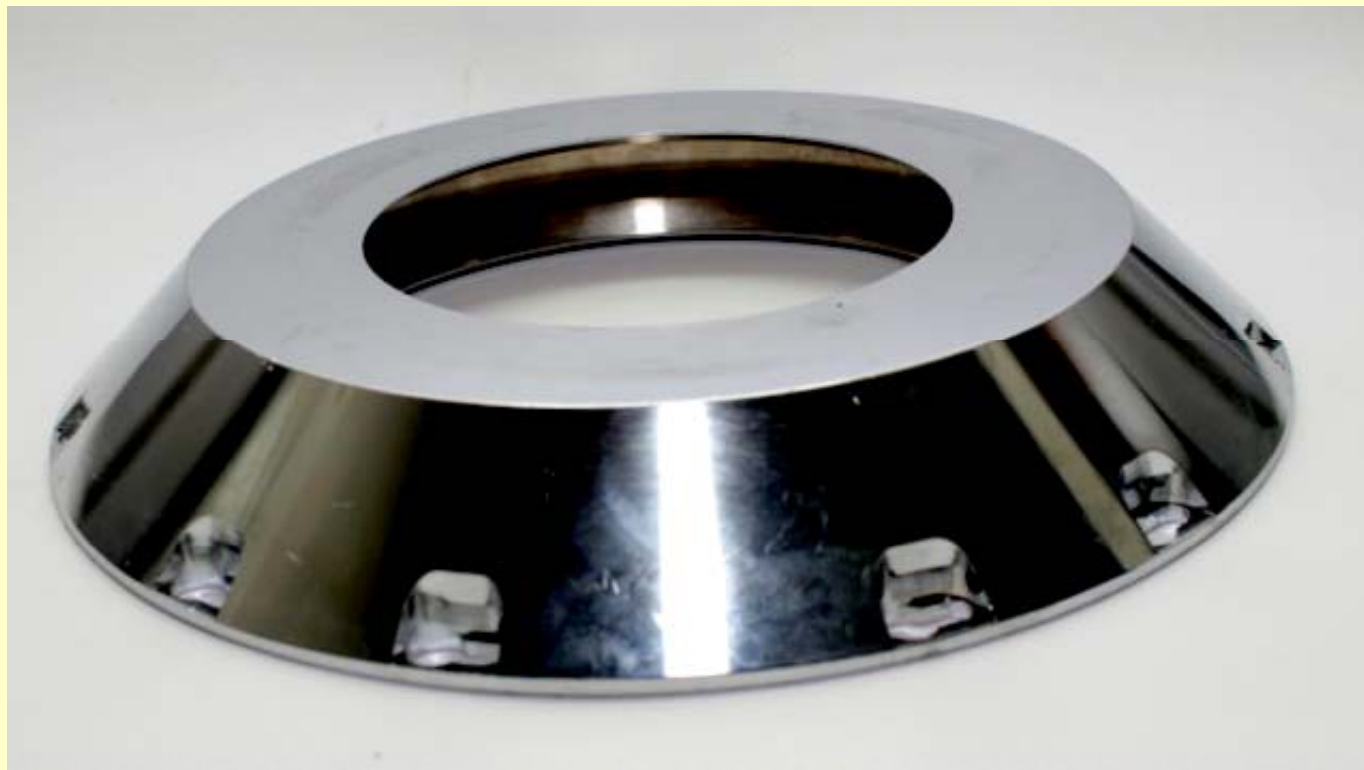
# Product Showcase



# Product Showcase



# Product Showcase



# Product Showcase





# Product Showcase



# Product Showcase



# Materials Machined

Copper

Brass

Steel

Aluminum

Plastics: Delrin, Pon, Peek

# MALLEDGE ENGINEERING

Address:

18, Lengkok Kapal  
Taman Industrial Ringan Chain Ferry  
12100, Butterworth  
Penang, Malaysia

Tel +604 324 8422 | Fax +604 324 6182

CW Loo (Director) [cwloo@malledge.com](mailto:cwloo@malledge.com) [www.malledge.com](http://www.malledge.com)